



## Quick Start Guide



PICTURES SHOWN ARE FOR ILLUSTRATION PURPOSE ONLY

- 1 Download FOBO TPMS App onto your smartphone. It is available on both the Google Play Store & the Apple App Store.



**FOBO TPMS**

- 2 Ensure that Bluetooth, Location services, and Internet connection are turned on in your smartphone settings.

- 3 Open the FOBO TPMS App and sign in/signup using your personal email address, or sign in via Google account.



4

Allow all permissions requested by the App.

5

To install FOB0 TPMS sensor, press the plus (+) button in the middle of the screen.



6

This screen will prompt you to select the product type. Choose "RVs" and press the "Next" button.

### Select Product Type



FOBO Tire



FOBO Bike



FOBO Cycle



RVs

Select this type if you want to install sensors on a **Recreational Vehicle (RV)** that has **4 to 8 tires**.

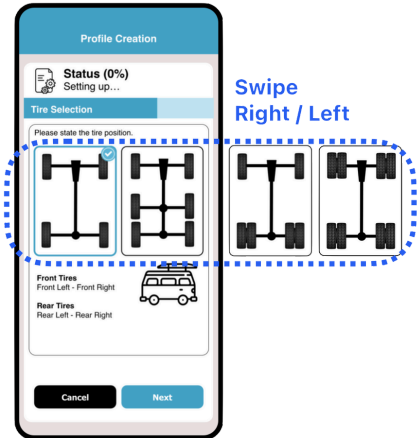


Cancel

Next

7

On the "Profile Creation" screen, select the tire selection type. Carefully select the tire position that fits your RV and press the "Next" button.



8

Enter a profile name (or vehicle name). Optionally, you can also set a vehicle photo. After entering the profile name, press the "Next" button.

### Profile Creation

**Status (50%)**  
Setting up...

#### Profile Name



Profile Name

Enter your profile name and set your vehicle photo (optional).

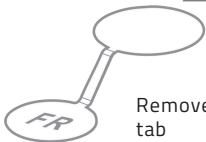
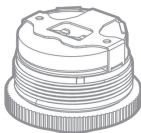
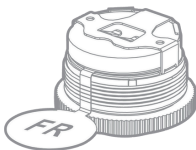
Next

9

Unscrew sensor cover to remove battery tab. Then, screw back the sensor cover and ensure it is tightened.



Unscrew sensor cover




Remove battery tab


10

Enter the recommended tire pressure settings. After setting the pressure, press the "Next" button.

**Profile Creation**

**Status (70%)**  
Setting up...

**Pressure Settings**



Tire Position	Min	Rec	Max
Front Tires	180	200	250
Middle Tires	180	200	250
Rear Tires	180	200	250

Set your vehicle recommended tire pressure or accept the default settings above.

**Next**



**11**

Prior to installing sensors on tire valve, install FOB0 Lock-Nuts to secure a sensor.

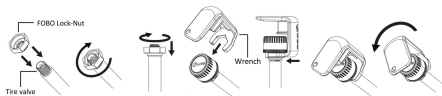
### To install FOB0 Lock-Nut:



#### OPTIONAL FOR EXTRA SECURITY

1. Screw on the FOB0 Lock-Nut to the tire valve with 'bump' facing inward until the end of the valve thread.
2. Screw on the FOB0 TPMS sensor to the tire valve securely.
3. Turn the FOB0 Lock-nut counter-clock wise as though you are removing it until it meets the FOB0 TPMS sensor.
4. Gentle hold the FOB0 TPMS sensor and use the provided wrench to further tighten the FOB0 Lock-Nut against the FOB0 sensor. This is to avoid the twisting of the rubber valve.

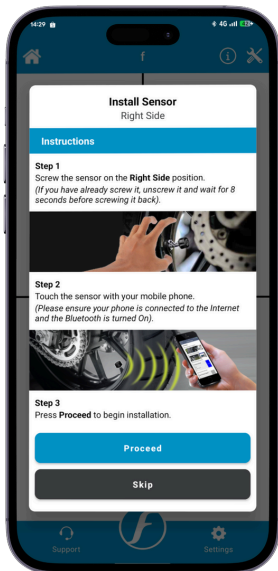
**Note:** Gently tighten the Lock-Nut against the sensor; no excessive force is required.



**Note:** It is recommended to apply some soap water (on the tire valve installed with FOB0 sensor) after installing a sensor in order to check for any potential leak. Once all sensors are installed, press the "Finish" button to complete the setup.

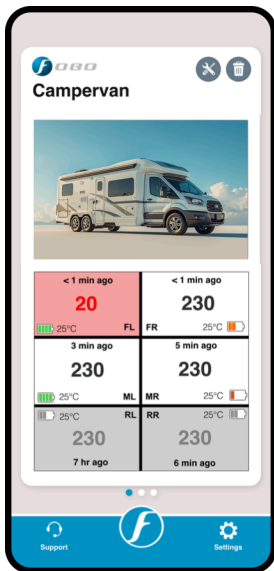
12

Install the FOB0 sensors on each tire in any position you choose, and then follow the on-screen instructions to ensure proper installation of the sensors.



13

Your installation is now complete !  
You should now be able to see the sensor readings for each tire on the app's main screen.





Please download the complete user manual from  
**[www.my-fobo.com](http://www.my-fobo.com)**