



Quick Start Guide



PICTURES SHOWN ARE FOR ILLUSTRATION PURPOSE ONLY

1

Download FOBO TPMS App onto your smartphone. It is available on both the Google Play Store & the App Store.



FOBO TPMS

2

Ensure that Bluetooth, Location services, and Internet connection are turned on in your smartphone settings.

3

Open the FOBO TPMS App and sign in/signup using your personal email address, or sign in via Google account.



4

Allow all permissions requested by the App.

5

To install FOBO BIKE 2 sensor, press the plus (+) button in the middle of the screen.



6

This screen will prompt you to select the product type. Choose "FOBO Bike" and press the "Next" button.



7

On the "Profile Creation" screen, select the installation type. Note that there are two types of FOBO Bike products. Select "**FOBO BIKE 2**" and press the "Next" button.



8

Select Bike type and key in the other details, press NEXT to save the profile settings.

Profile Creation

**Status (50%)**
Setting up...

Profile Name



Profile Name

Enter your profile name and set your vehicle photo (optional).

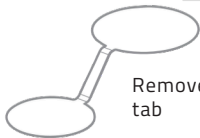
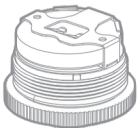
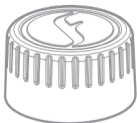
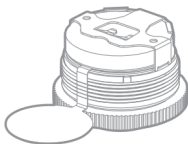
Next

9

Unscrew sensor cover to remove battery tab. Then, screw back the sensor cover and ensure it is tightened.



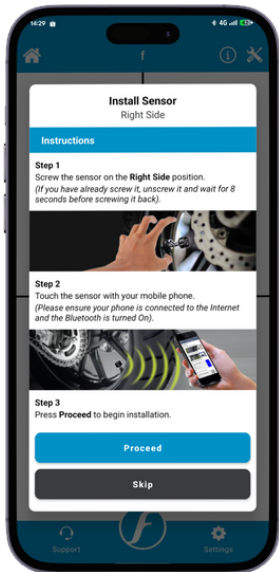
Unscrew sensor cover



Remove battery tab

10

Follow the on-screen instructions and install the sensors to the tire valves accordingly.



Prior to installing sensors on tire valve, install FOB0 Lock-Nuts to secure a sensor.

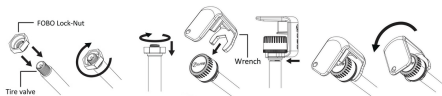
To install FOB0 Lock-Nut:



OPTIONAL FOR EXTRA SECURITY

1. Screw on the FOB0 Lock-Nut to the tire valve with 'bump' facing inward until the end of the valve thread.
2. Screw on the FOB0 TIRE LITE sensor to the tire valve securely.
3. Turn the FOB0 Lock-nut counter-clock wise as though you are removing it until it meets the FOB0 TIRE LITE sensor.
4. Gentle hold the FOB0 TIRE LITE sensor and use the provided wrench to further tighten the FOB0 Lock-Nut against the FOB0 sensor. This is to avoid the twisting of the rubber valve.

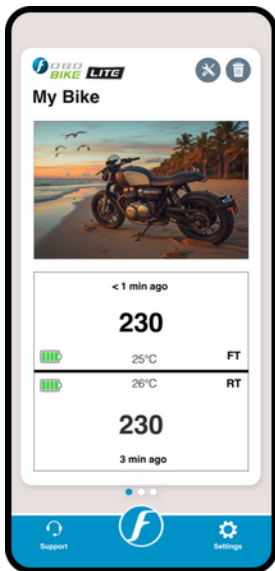
Note: Gently tighten the Lock-Nut against the sensor; no excessive force is required.



Note: It is recommended to apply some soap water (on the tire valve installed with FOB0 sensor) after installing a sensor in order to check for any potential leak. Once all sensors are installed, press the "Finish" button to complete the setup.

12

Your installation is now complete !
You should now be able to see the sensor readings for each tire on the app's main screen.





Please download the complete user manual from
www.my-fobo.com